

SELLING & RENTING
HOMES
— Since 2005 —



LAND ESTATES
SALES, LETTINGS & MANAGEMENT



BARLEY CLOSE GREENHITHE

£1,675 Per Month

- Two bedroom apartment.
- Modern throughout.
- Near to Bluewater Shopping Centre.
- Two allocated parking spaces.
- Near to Stone Crossing and Greenhithe Train Station.

Land Estates are delighted to introduce this two bedroom, modern apartment located in Greenhithe.

The property is on the first floor and can be accessed by both lift or stairs.

Step into this spacious apartment, where you'll find a welcoming hallway with storage, a bright open-plan kitchen and living room, two spacious double bedrooms and the family bathroom.

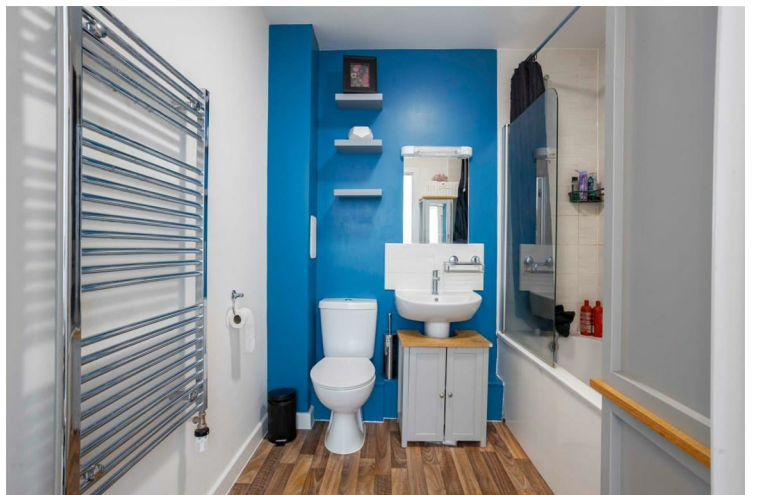
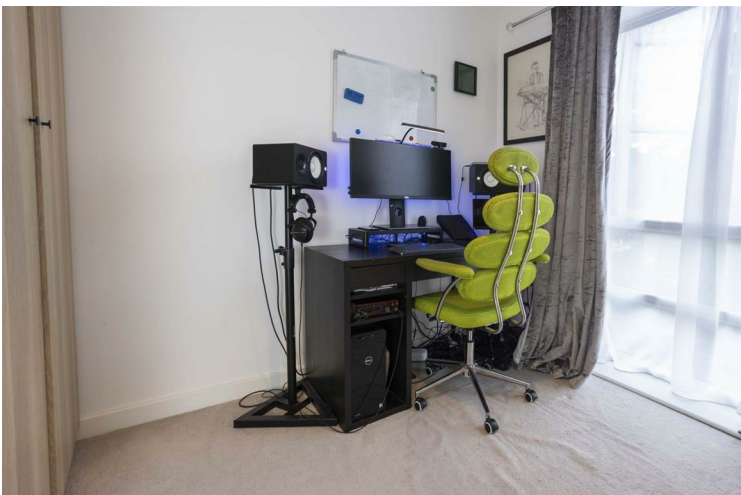
The apartment also benefits from two allocated parking spaces and a Juliet balcony.

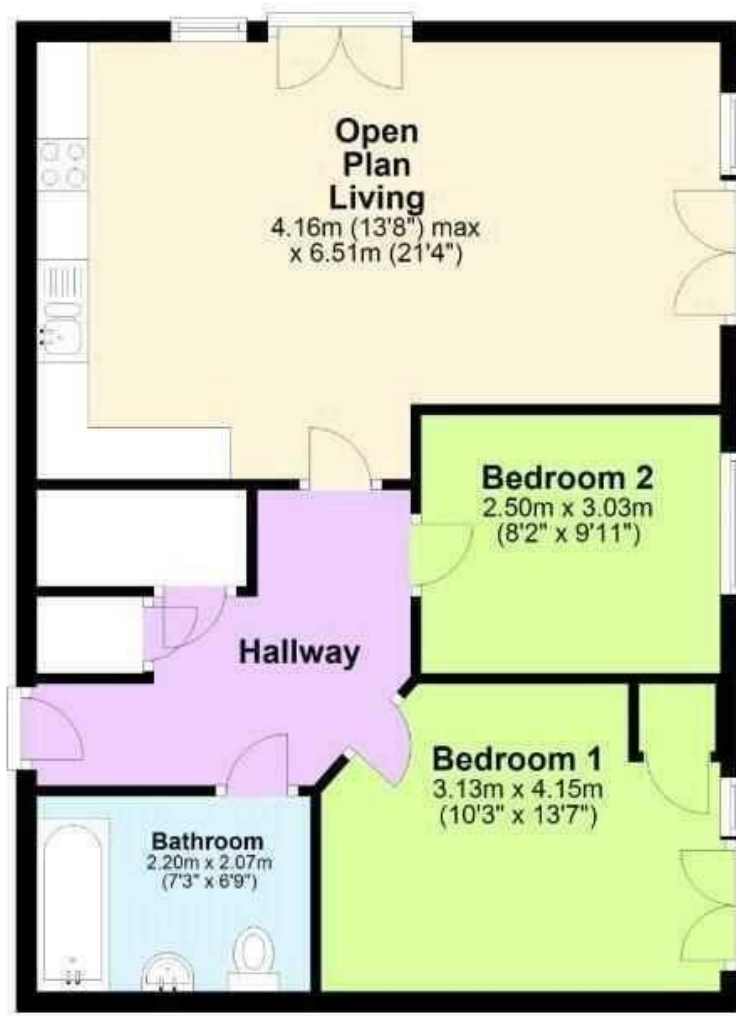
Barley Close is in a great location, Bluewater, , Stone Crossing Station, Greenhithe Station and a variety of schools are all within close proximity.

The property is offered either partly furnished or unfurnished and is available from 1st July.

Please contact Land Estates to arrange a viewing.







Total area: approx. 60.7 sq. metres (653.6 sq. feet)



Energy Efficiency Rating		
	Current	Potential
<i>Very energy efficient - lower running costs</i>		
(92 plus) A		
(81-91) B	82	82
(69-80) C		
(55-68) D		
(39-54) E		
(21-38) F		
(1-20) G		
<i>Not energy efficient - higher running costs</i>		
England & Wales	EU Directive 2002/91/EC	

EPC Rating: B Council Tax Band: D

Agents Note: Whilst every care has been taken to prepare these particulars, they are for guidance purposes only. All measurements are approximate and are for general guidance purposes only and whilst every care has been taken to ensure their accuracy, they should not be relied upon and potential buyers/tenants are advised to recheck the measurements

Land Estate
6 Market Street
Dartford
Kent
DA1 1ET

01322 413501
info@landestate.co.uk
www.landestate.co.uk



LAND ESTATES
SALES, LETTINGS & MANAGEMENT